

## WEEKLY REPORT ON GOOGLE CLASSROOM CLASS-XI (Commerce)

**Reporting Period 3rd JAN. to 15th JAN. 2021**

Students attended online sessions of all the subjects through Google classroom app and were provided the following assignments, worksheets, videos and online academic material and links to enhance the learning outcome.

I conducted the assembly as per the guidelines.

Class Teacher: Rashmi Soni

SUBJECT AND SUBJECT TEACHER	TOPICS COVERED	LINK /ASSIGNMENT UPLOADED ON GOOGLE CLASSROOM	ASSESSMENT TAKEN (YES/NO) (QUIZ/GRADED TEST/VIVA/GOOGLE FORM/GROUP DISCUSSION)	MODE OF TEACHING AND ADDITIONAL LINKS VIDEO/PPT PROVIDED TO SUPPLEMENT THE TEACHING
ENGLISH Ms NAYYER AKHAN				
HINDI Ms ANURADHA SHRIVASTAVA	<p>पुनरावृत्ति कार्य</p> <p>पाठ- स्पीति में बारिश</p> <p>पाठ- जामुन का पेड़</p> <p>पाठ- भारत माता</p>	<p>ऑफ लाइन तथा ऑन लाइन क्लास</p> <p><a href="https://meet.google.com/shs-hqct-hog">https://meet.google.com/shs-hqct-hog</a></p> <p><a href="https://meet.google.com/bev-szyc-rih">https://meet.google.com/bev-szyc-rih</a></p> <p><a href="https://meet.google.com/zvq-qgph-uvp">https://meet.google.com/zvq-qgph-uvp</a></p> <p><a href="https://meet.google.com/pkh-aqyb-ofi">https://meet.google.com/pkh-aqyb-ofi</a></p> <p><a href="https://meet.google.com/nnj-cvsp-jxc">https://meet.google.com/nnj-cvsp-jxc</a></p> <p><a href="https://meet.google.com/gyt-aoea-ucj">https://meet.google.com/gyt-aoea-ucj</a></p>	हाँ कक्षाकार्य तथा गृहकार्य के द्वारा	पाठ के लेखकों का परिचय दिया। पाठों का सार समझाया। पाठों से संबंधित प्रश्न पूछे तथा समझाए। पाठों के अभ्यास प्रश्न पूछे तथा समझाए।

<p><b>BUSINESS STUDIES</b></p> <p><b>Ms. PRATI KSHA SHARMA</b></p>	<p>Below mentioned topics have been covered during this week.</p> <p>Chapter 9 Internal Trade</p> <p>Types of Retail Trade :</p> <ol style="list-style-type: none"> <li>1. Itinerant Retailers</li> <li>2. Fixed shop retailers</li> </ol>	<p>Online and Offline classes were conducted in the school during this period.</p> <p><a href="https://drive.google.com/file/d/1m2WgN1HlvXyt2YYJSyhZLWvUxU7HtVqi/view?usp=sharing">https://drive.google.com/file/d/1m2WgN1HlvXyt2YYJSyhZLWvUxU7HtVqi/view?usp=sharing</a></p>	<p>Worksheet, Home and Classroom assignments have been assigned to solve through Class group.</p> <p><a href="https://docs.google.com/document/d/194tgWeWx2Znce82ImpBYxSaS6F9c2JGD/edit?usp=sharing&amp;oid=102364788840754502143&amp;rtpof=true&amp;sd=true">https://docs.google.com/document/d/194tgWeWx2Znce82ImpBYxSaS6F9c2JGD/edit?usp=sharing&amp;oid=102364788840754502143&amp;rtpof=true&amp;sd=true</a></p>	<p>Explanation was given through online and offline classes at school.</p>
<p><b>ACCOUNTANCY</b></p> <p><b>Ms. PRATI KSHA SHARMA</b></p>	<p>Below mentioned topics have been covered :</p> <p>Rectification of Errors</p> <ol style="list-style-type: none"> <li>1. One sided errors</li> <li>2. Two sided errors</li> </ol>	<p>Online and Offline classes were conducted in the school during this period.</p> <p><a href="https://drive.google.com/file/d/1xJAAUzhE52co2IBRj5_zuKwvrou rMB2_/view?usp=sharing">https://drive.google.com/file/d/1xJAAUzhE52co2IBRj5_zuKwvrou rMB2_/view?usp=sharing</a></p> <p><a href="https://drive.google.com/file/d/1fEpNiDEovc2tzP2tSXOYHOCism8iy_oD/view?usp=sharing">https://drive.google.com/file/d/1fEpNiDEovc2tzP2tSXOYHOCism8iy_oD/view?usp=sharing</a></p> <p><a href="https://drive.google.com/file/d/1iqLY8IFvAZxfOhLjWjjSmhwCBk4qakDZ/view?usp=sharing">https://drive.google.com/file/d/1iqLY8IFvAZxfOhLjWjjSmhwCBk4qakDZ/view?usp=sharing</a></p> <p><a href="https://drive.google.com/file/d/1p0kkGf4dBP yozQ--t845FLWy_AllUcGa/view?usp=sharing">https://drive.google.com/file/d/1p0kkGf4dBP yozQ--t845FLWy_AllUcGa/view?usp=sharing</a></p>	<p>Worksheet, Home and Classroom assignments have been assigned to solve through Class group.</p>	<p>Explanations through Offline classes were done. Assignments to note were sent through screenshot images and pdf file and uploaded .Self prepared notes of the chapter provided . Online classes were conducted and assignments were shared on Google Classroom.</p>
<p><b>ECONOMICS</b></p> <p><b>Ms. RASHMI SONI</b></p>	<p>Supply Percentage method to find elasticity of supply .</p>	<p>Offline classes is taken and also class test is taken after the completion of chapter . Notes also given in class groups.</p>	<p>Worksheet, Home and Classroom assignments have been assigned to solve through Google classroom and Class group. link has been sent to solve the quiz and worksheet.</p>	<p>Explanations through Offline classes were done. Assignments to note were sent through screenshot images and pdf file and uploaded .Self prepared notes</p>

				of the chapter provided .
--	--	--	--	------------------------------

IP

Mr. Ankur Sharma

2 D Array creation  
Functions eye(),  
zeros(), diag(),  
transpose(),  
array(), arrange(),  
etc.

Array Slicing in  
1D and 2D NumPy  
Array

Iteration of NumPy  
Array, Flattening a  
2D Array

Practical done by  
the student on SQL  
Commands:  
Create, Use, desc,  
insert and select

Practical done by  
the student on SQL  
giving as a Term 2  
Practical  
Assignment

Solving SQL  
queries given in  
Term 2 Practical  
Assignment

Solving SQL  
queries given in  
Term 2 Practical  
Assignment

<https://drive.google.com/file/d/1QSFk1kHSizCUn4Rp5BR4svUtNUtTSXwv/view?usp=sharing>

<https://drive.google.com/file/d/1nZvTyc11rZQI-ry4oK4qOjBKjuRcVL9e/view?usp=sharing>

[https://drive.google.com/file/d/1h\\_8EOGGhRPUDIq5j9NGY429T-0e18sQh/view?usp=sharing](https://drive.google.com/file/d/1h_8EOGGhRPUDIq5j9NGY429T-0e18sQh/view?usp=sharing)

[https://drive.google.com/file/d/1AekTiwTsbYabX6dN11TcEB08McrdP\\_D/view?usp=sharing](https://drive.google.com/file/d/1AekTiwTsbYabX6dN11TcEB08McrdP_D/view?usp=sharing)

<https://drive.google.com/file/d/1qZoMIQioAcin9Lmighyz5-wFx8ZQpK-P/view?usp=sharing>

Yes through classwork  
and oral questioning.

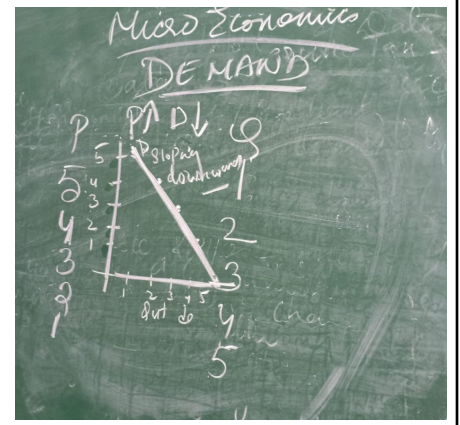
Explanation was  
given through online  
and offline classes as  
per the schedule.

<p>PE</p> <p>Mr NITIN JAISWAL</p>	<p>Unit -9</p> <p>Psychology and Sports</p> <p>Definition of Growth &amp; Development</p> <p>Stages of Growth and Development</p> <p>Adolescent Problems &amp; Their Management</p>	<p>Offline classes were conducted in the school during this period.</p>	<p>Yes</p> <p>Through written assignment [Classwork and Homework]</p>	<p>Explanation was given through offline classes.</p>
-----------------------------------	---	---	---	---

Evidences for reference

HINDI	ENGLISH	BST
	ACCOUNTANCY	IP
PE		ECONOMICS

Evidence is not available as classes were conducted offline



**REPORT SUBMITTED BY  
RASHMI SONI**